

Software Installation and Operation Manual

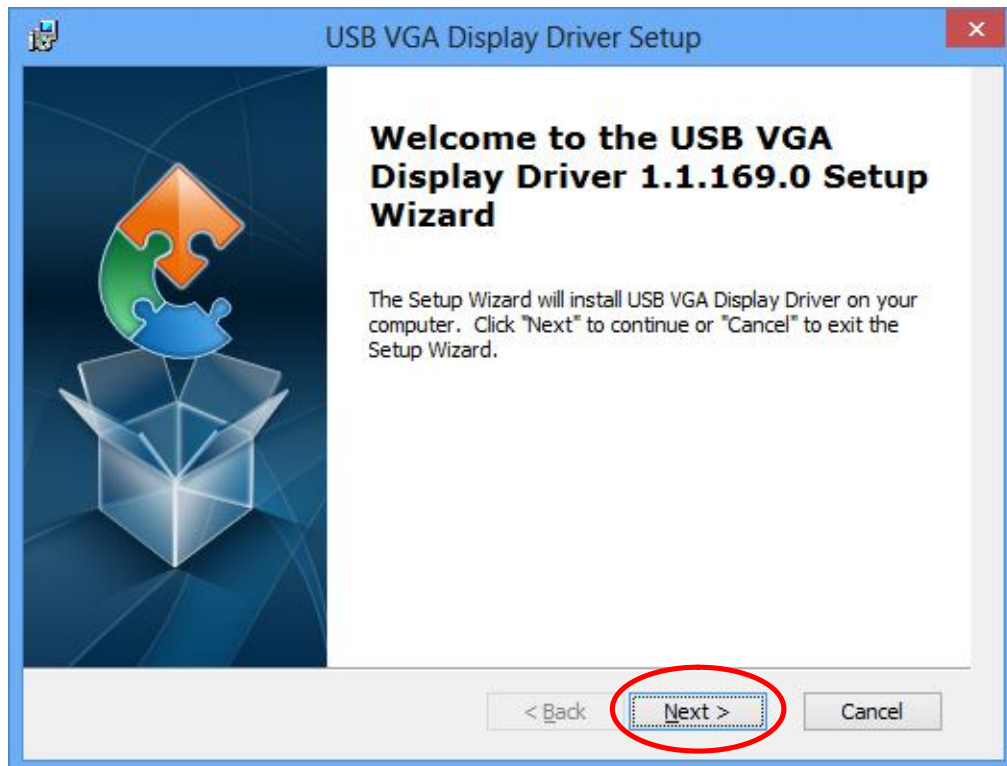
The following instructions are showing how to install/un-install our USB VGA driver and basic operation guide of our USB VGA Adapter.

Driver Installation

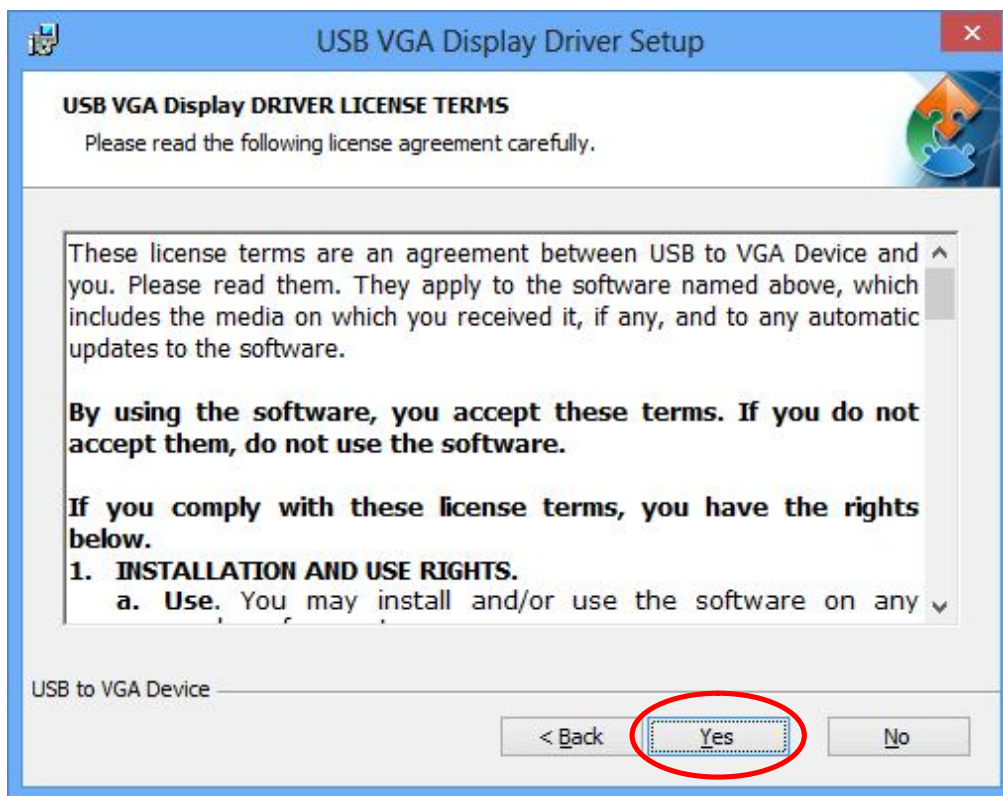
1. Locate the USB3.0-VGA.exe. This file will be located in the root directory of the Driver CD.



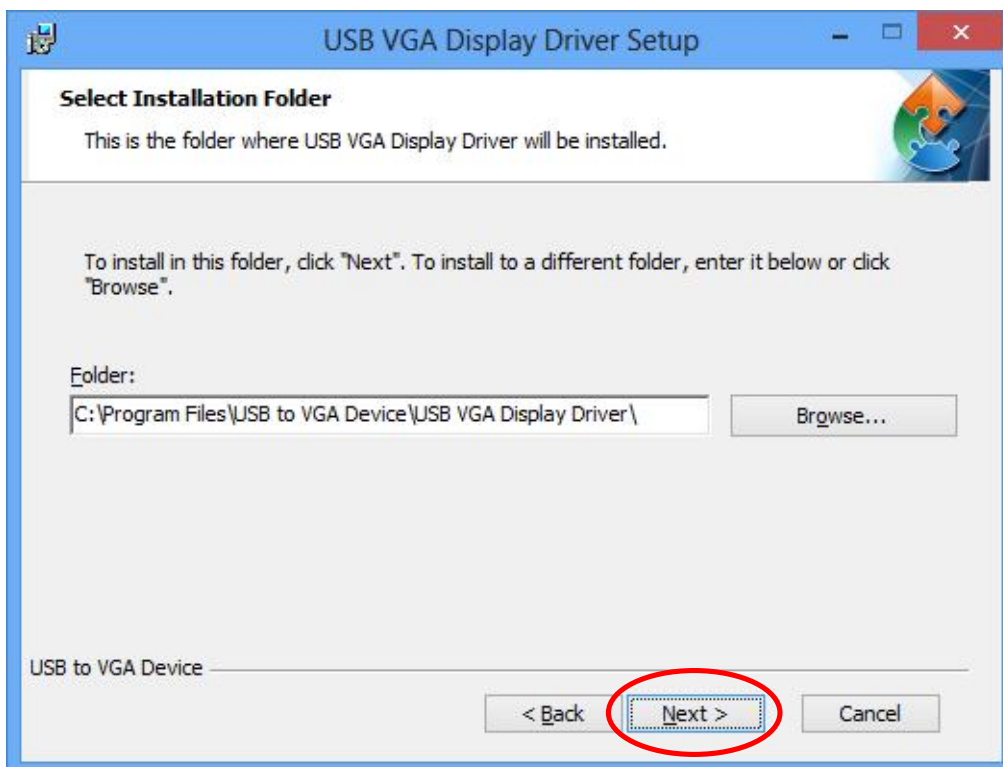
2. Executing the USB3.0-VGA.exe application will launch the following screen. Please click "Next" to start installation process.



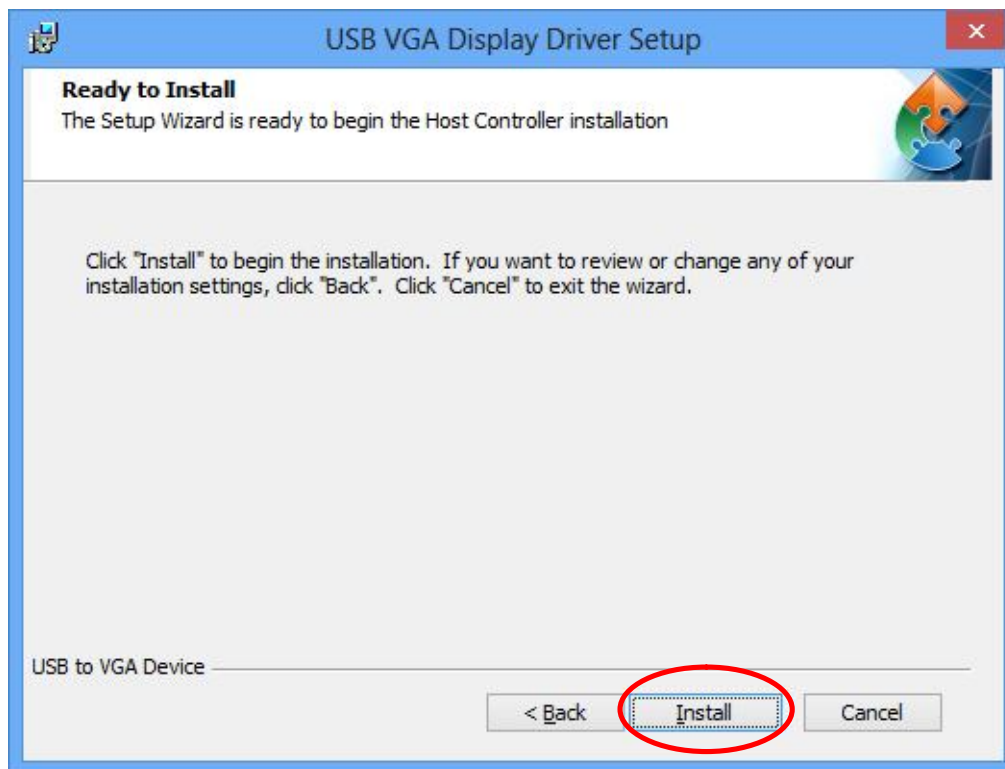
3. Read the license agreement and click "Yes" to accept the license agreement.



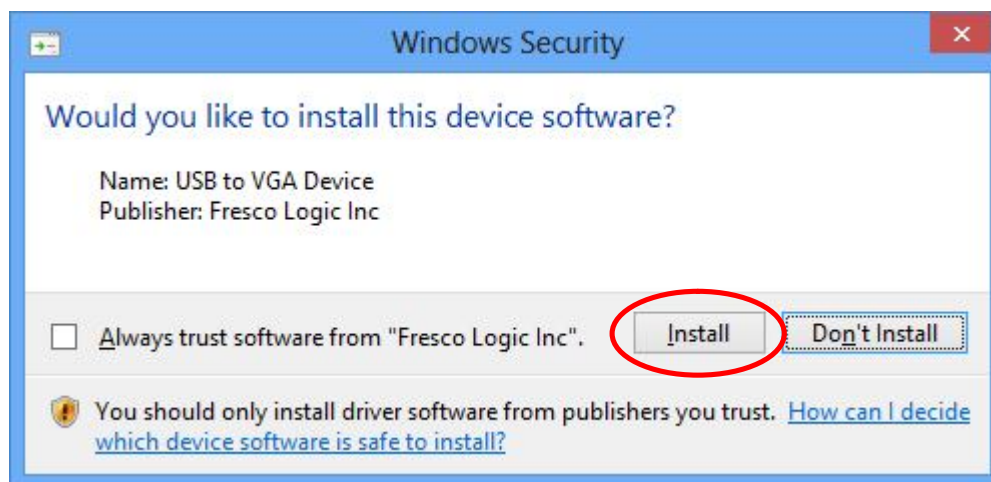
4. Select the folder you want to install the driver and click "Next" to continue the installation.



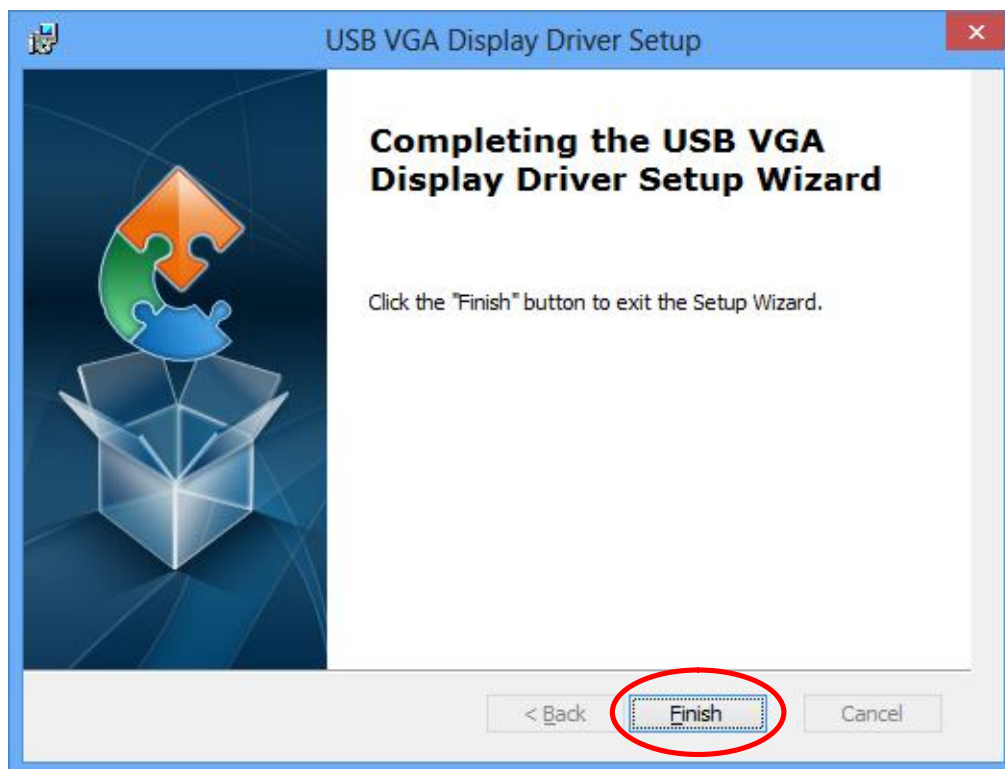
5. Now the driver is ready to install, click "Install" to start the installation.



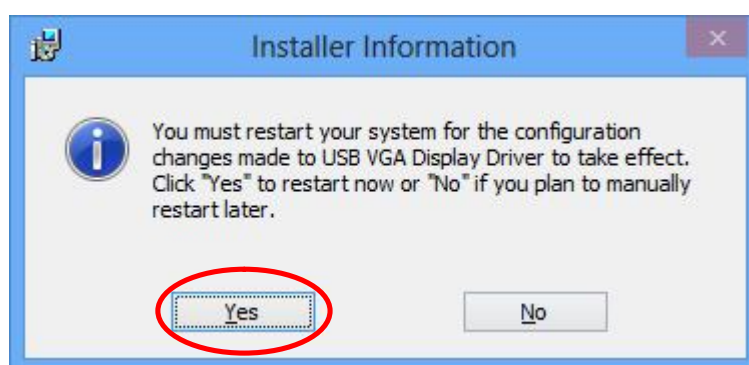
6. Click "Install" to trust our software driver



7. When the installation is done, click "Finish" to complete the installation

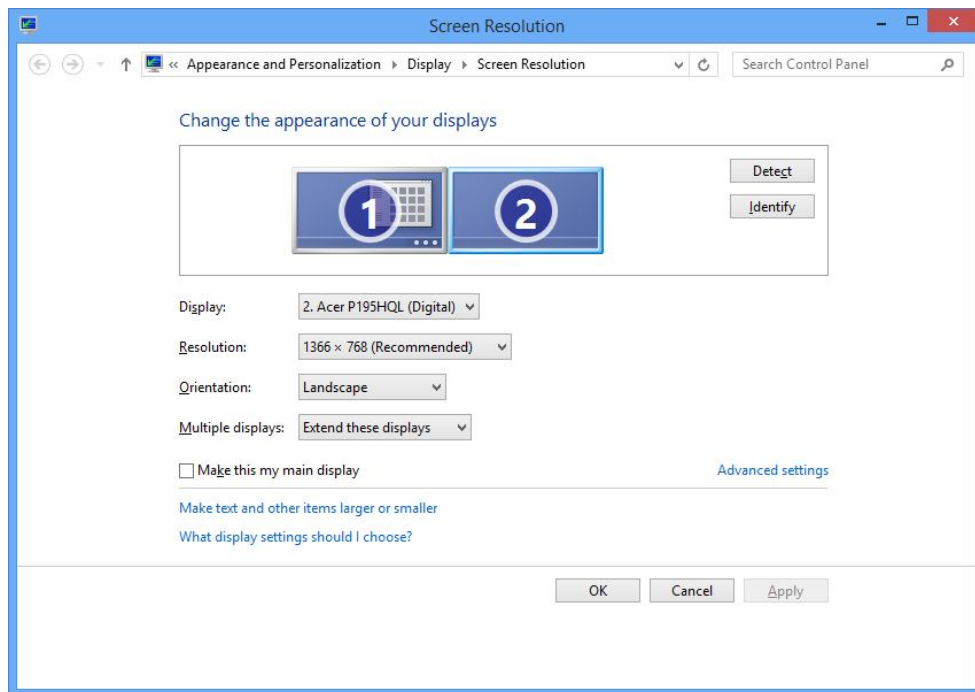


8. System will require a system reboot for the USB Display Adapter to initialize.



9. After reboot the system, our USB VGA adapter will be enabled as default (Extension mode).

Configuring the USB Video Adapter



1.1.1 Resolution Setting

You can set the display resolution of our USB VGA Adapter from Windows screen resolution setting page (right click the mouse and select “Screen resolution”). Select the resolution from the resolution list and click “Apply” to apply the setting.

1.1.2 Orientation setting

You can set the orientation of our USB VGA Adapter from Windows screen resolution setting page (right click the mouse and select “Screen resolution”). Select the orientation from the list and click “Apply” to apply the setting. Currently, we support “Landscape”, “Portrait”, “Landscape (flipped)”, and “Portrait (flipped)”.

1.1.3 Multiple displays setting

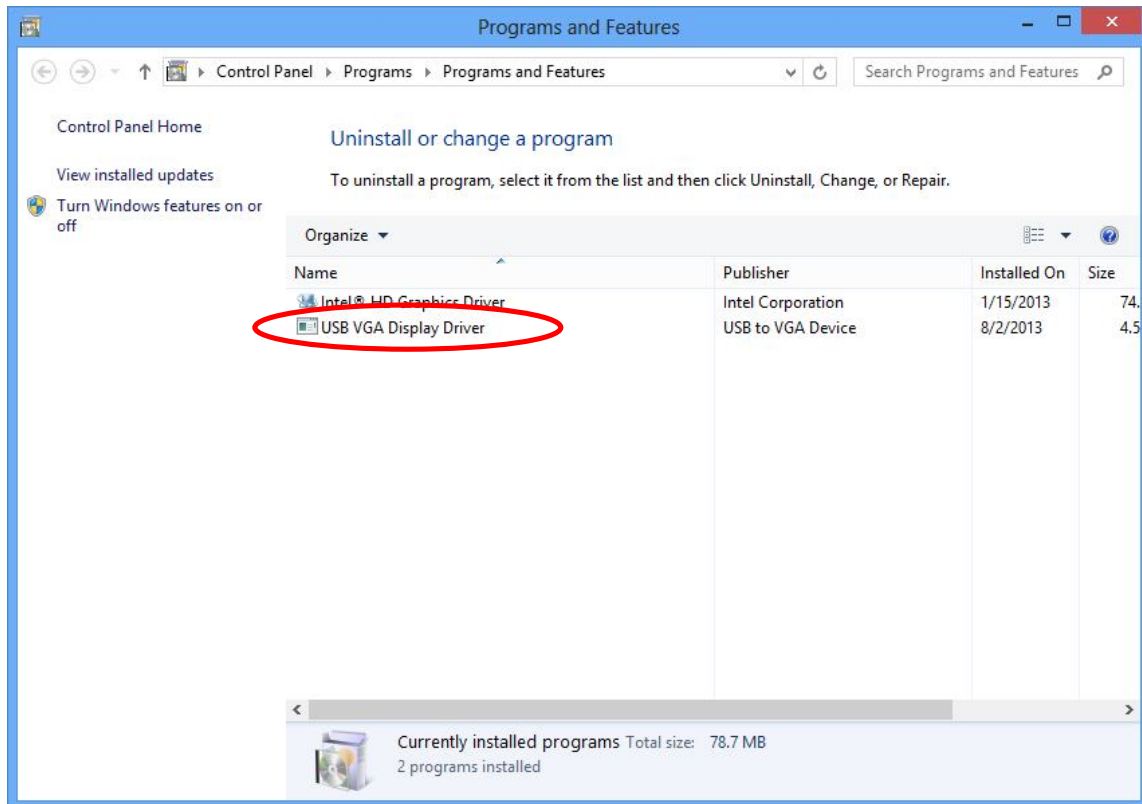
You can set the display mode of our USB VGA Adapter from Windows screen resolution setting page (right click the mouse and select “Screen resolution”). Select the display mode from the list and click “Apply” to apply the setting. Currently, we support “Extend these displays”, “Duplicate these displays”, “Show desktop only on 1” and “Show desktop only on 2”.

1.1.4 Set as Main Monitor

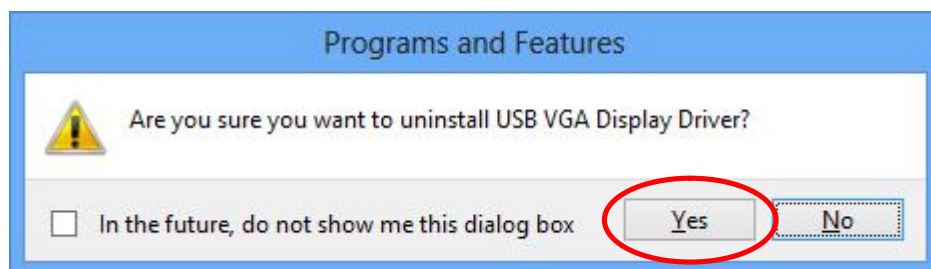
Selecting this option allows your computer to consider the monitor connected through our USB VGA Adapter as your primary monitor. You can change the setting from Windows screen resolution setting page (right click the mouse and select “Screen resolution”). Click the “Make this my main display” and apply the setting

Driver Un-installation

1. You can uninstall our USB VGA driver from Control Panel→Programs→Uninstall a program. Select “USB VGA Display Driver” and click “Uninstall” to start uninstalling our VGA driver.



2. Click “Yes” to start uninstalling our software driver



3. System will require a reboot to finish the un-installation.

